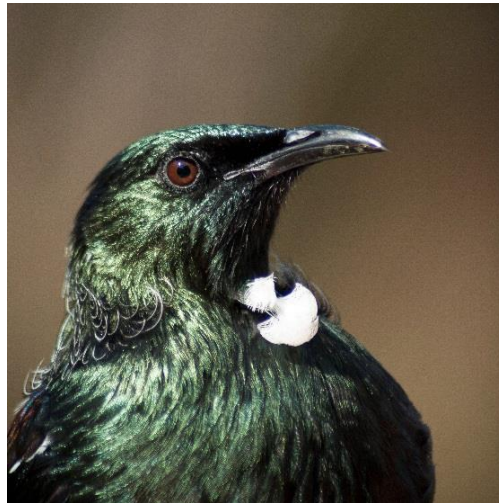


Deadline for next issue:
Friday 12 February 2021

Please send your newsletter
items to: rotoitinews@gmail.com

This newsletter was produced
with the help of the Rotoiti
District Community Council,
Department of Conservation and
Mark & Tania Gill.

You can download a copy of
previous newsletters from
www.lakerotoiti.school.nz/newsletters



Lake Rotoiti School News – A big thank you from “the children”

The Kia Kai wine tasting evening and associated wine sales have been a huge success raising in excess of \$4,000 for the Children of Lake Rotoiti School. Well supported by both those who live and Holiday here, its success reinforces what an awesome little community we have. The money raised will go towards the cost of extracurricular activities such as skiing, school trips, and school camp.

A Big Thank you to Jeff Hart from Jackson Estate/Pask Wines for creating this opportunity and to all those that brought wine and attended the wine tasting evening and brought auction items. A special thanks to Bruce Batty from Summit for running yet another successful "its For the Children" auction and Derryl and Tania Henman from Dollar Save Auto for going out of their way to round up so many items for the auction.

And of course, a big thank you to the sponsors whose support made the event the success that it was: Jackson Estate Wines, Summit Real Estate, Alpine Lodge, Dollar Save Auto Centre, Mapua Leisure Park, Hot Rocks Pizzeria, Rock Gas, Lambretta's Cafe & Bar, Sands Bar, Curly Tree Whitebait Company, Repco Nelson, Taaj Indian Restuarant, Sharesies, NBS

Coming up

Thursday Sailing

Kerr Bay (eastern end) by the Water Taxi at 6pm
Bring something to put on the BBQ and your own refreshments

12 & 13 February 2021

Tuna e hoe outrigger canoe racing event, Kerr Bay

24 February

Lou's Hair, Beauty & Massage @ Community Hall - Phone for an appointment
Lou 0272 522 039
EFTPOS available

6 & 7 March 2021

Antique & Classic Boat Show, Kerr Bay

13 & 14 March 2021

Powerboat Regatta, Kerr Bay

17 April 2021

Alpine Lodge Loop the Lake Race

<https://nelsonevents.co.nz/loop-the-lake>

Sundays 10.30 am

Lake Rotoiti Chapel

services are run by locals and non-denominational. Everyone welcome.

Photos: Early morning at the jetty – S Field. Angelus Hut, Jonathan Christiansen

Note: regular notices about fitness related activities are listed in a separate box within the Newsletter.



Wasp control in the Nelson Lakes district

The Department of Conservation (DOC) is planning to use targeted wasp baiting method to reduce wasps in public conservation land in the Nelson Lakes district in January/February 2021.

Why should we control wasps?

Vespid wasps (wāpi) are now one of the most damaging insect pests in New Zealand's natural areas and their numbers seem to be increasing. Introduced wasps threaten our native birds – particularly in our honeydew beech forests where they have been killing chicks as they emerge from their eggs and taking available honeydew, which is a valuable energy source for birds such as kākā, tūi, and korimako (bellbird).

High densities of wasps exert intense predation pressure on native invertebrates, in particular native caterpillars and orb web spiders. Wasps are likely contributing to the decline of some threatened insect species and affecting the ecosystem function through removal of insect pollinators and prey sources for other species.

Wasps attack honeybees raid, their hives and rob their honey. The flow-on effects include lost honey production, the cost of replacement bees and in turn higher pollination costs for horticulture.

Wasps pose a significant threat to human health – more than 1300 people each year seek medical treatment for wasp stings and many more wasp stings are unreported.



Figure 1: Common wasp, *Vespula vulgaris*.

Why is DOC doing this work?

Conserving New Zealand's natural ecosystems – ensuring they are healthy and functioning and providing a safe place for public recreation are key roles for DOC. Control of pests on public conservation land to protect these values is an important part of our role.

How will DOC control wasps?

The Department intends to use a toxic wasp baiting method which exploits the social structure of a wasp colony. Vespex is a protein (chicken meat) bait, containing the insecticide fipronil which is placed in bait stations. The protein bait ensures that it is targeting wasps and will not attract bees but is only effective at times of the year when wasps are feeding on protein.

Bait stations are yellow or orange and are placed 1.5 metres above the ground to avoid interactions with non-target species, such as weka (Figure 2). Worker wasps collect the bait from stations and return with it to their nest. They feed it to the queen and the developing larvae, therefore poisoning the entire colony within a short time. The bait stations only need to be filled once during the summer and all remaining bait is removed after three to seven days.

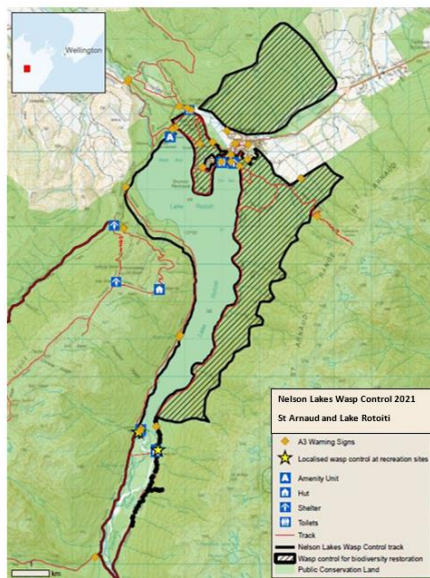
This method has been trialled under strict conditions in Nelson Lakes National Park and proven to reduce wasp populations and cause little adverse effects to other species.



Figure 2: Bait stations containing Vespex wasp bait.

Timeframe

In order to maximise the benefit to conservation the bait needs to be applied when the wasps are known to be feeding on protein and the weather is suitable – fine and preferably sunny to ensure wasps are active. Bait will be applied by the Department between the middle of January and the end of February 2021.



What areas will be targeted?

The Rotoiti Nature Recovery Project (RNRP) Mainland Island covers approximately 5000 ha of public conservation land on the western slopes of the St Arnaud Range in Nelson Lakes National Park and in Big Bush Conservation Area. Wasp control will be carried out over approximately 1600 ha of the RNRP for biodiversity protection purposes.

In addition, wasp control will be undertaken in the St Arnaud village and at key recreation sites and popular tramping tracks in Nelson Lakes National Park and around Murchison for public safety purposes.

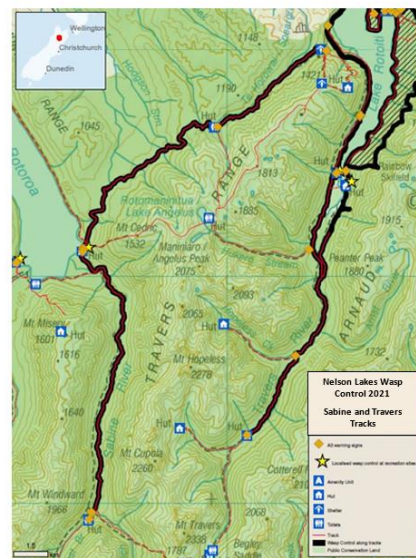
See attached maps for the area to be treated in this operation.

What safety measures are there?

DOC will be working closely with the manufacturer of the toxic bait to ensure that the control operation is managed rigorously, applying the best practice and procedures developed at Nelson Lakes National Park. This includes the practice of removing the bait that the wasps haven't eaten and using a monitoring programme to ensure bait is applied at the correct time and monitor the success of the wasp control.

If you have any questions or require further information about the upcoming operation, please contact:

Melissa Griffin
 Senior Ranger, Biodiversity
 Rotoiti/Nelson Lakes
 E: mgriffin@doc.govt.nz
 T: 03 521 1806





Over the summer we have had several unfortunate behavior incidents at the Lodge, some involving anti-social behavior. These are all related to the way in which people are choosing to pass through the Lodge grounds and what they are choosing to do while they are on the grounds.

These incidents have involved, both walkers and Mountain Bikers. Due to this we have come to a point that we are regrettably putting in place conditions of access for those who travel through the grounds. We value that our community whether they live at the Lake, have a Bach here or are just visiting, can travel through the grounds. To be able to maintain access we feel that it is timely to remind people that access through the grounds is a "privilege, not a right", as the Lodge and its grounds are leased and therefore public access is not a right and can be closed (Without notification or consultation). This is not something that we want to do as we see the value in people being able to walk through the grounds as part of their active recreation and that a lot of people enjoy walking past to see what has been happening and is happening and the amount of history that is in place.

The key conditions of entry are.

- Stick to the driveway only (No public through access across the Deck)
- Respect the user groups of Rotoiti Lodge that are in residence.
- No entry to Rotoiti Lodge or its Buildings without prior permission
- All Bikes are to travel at walking pace or slower and only on the sealed surfaces. (Bikes are also not permitted in the National Park, Rotoiti Lodge and its grounds are inside Nelson Lakes National Park)
- Access to the activity areas is strictly prohibited.
- Dogs are strictly prohibited from the Rotoiti Lodge Grounds

Next time you come through you will find that we have installed 2 gates. These gates are located on the north side of the Lodge where the driveway goes round and the other at the southern end of the Lease boundary. Neither of these gates are locked and on each gate is sign with the conditions of entry.

We need your help to keep access open please help us to do this by passing through the grounds respectfully.



We have a classic wooden dinghy for sale with a trailer and outboard motor.

Please contact Chris and Keith Cross, Oxford, Christchurch Phone: 03 3124707



Mountain Market

Our First Mountain Market is on
SUNDAY JANUARY 3rd
From 9:00am

Book your stall with Alexandra
Adults - \$10 / Kids - free
info@alpinelodge.co.nz

See you there!



ALPINE LODGE

WELSON LAKES NATIONAL PARK
ST ARNAUD - NEW ZEALAND



Julian McGaveston

Registered Electrician

**For all your domestic, commercial,
and rural electrical requirements**

M: (021) 566 645

E: julianmcgaveston@icloud.com

CHURCH NOTICES

Sunday

Lake Rotoiti Chapel, 10.30AM,
Rotoiti Street, St Arnaud

- Services are run by locals and non-denominational.
- Everyone welcome

Thursday & Sunday

Rotoiti Hub, 3 pm

- Holy Spirit lead worship, encounter, revelation and ministry.
- Phone Nigel and Sarah 027 441 3776 or Jane 027 332 8096 for info and location.

MAT PILATES

**Make a commitment to
your health - there's no
better time**

**New 10 week term starting
w/c 9th February**

Mondays 5.30pm* basic/int
Thursdays 10.00am basic

At Lake Rotoiti Community Hall

\$120 per term *Monday classes that fall on public
holidays will be held on the Weds

Contact Lisa on 021 202 4034

Sign up and receive a complimentary
one-to-one equipment-based Pilates lesson
at my home studio in St Arnaud

BE GET STAY



Regular activities in and around St Arnaud

"Circuit Breakers" exercise group
Monday, Wednesday, Fridays 10 am,
Community Hall
All welcome, gold coin donation
Gael 027 280 4078

Pilates

Community Hall on Mondays at 5.30pm and
Thursdays at 10.00am. Contact Lisa 021 202 4034

Seido-Karate

Community Hall
Tuesdays 6pm - kids & beginners
Thursdays 6 pm – General Class
Graeme 021 0859 4088. Gold coin donation

Alpine Yoga (all levels) & Massage

Alpine Lodge
Tuesday, Wednesday and Thursday 5:30 pm
Sunday 9:00 am
Contact Ashton 022 525 7871

CONTRIBUTING TO THE NEWSLETTER

Please send your contributions in the following formats:

- Advertising and notices sized to fit the newsletter columns. Accepted formats: MSWord, PDF or JPG.
- Full page ads incur a fee - \$30 (b&w) or \$70 (colour). This is a contribution towards photocopying costs. Please pay at the Rotoiti/Nelson Lakes Visitor Centre.
- Articles: plain text submitted in MS Word format, or in the body of an email.
- Photos: JPG files up to 5MB, attached to an email (not embedded in text).

Contact: rotoitinews@gmail.com



**Servicing Murchison, St Arnaud
and surrounding areas**
Thursdays

Plumbing - Gasfitting - Drainlaying
Shared travel costs

Phone or email to book your job

03 543 8090 or 0800 301507

info@tuffnell.co.nz

***We thank all our existing clients for
their continued support"***



The Tree Doctor

Available for -

*felling *form pruning *reductions
*thinning *hedge trimming* tree removals
16 years experience, references available.

Insured

For all aspects of tree care

call Chris 02102647942

thetreedr@yahoo.com