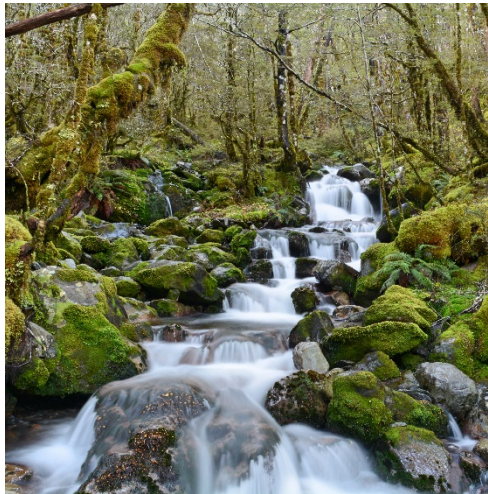


Deadline for next issue:  
Friday xxxxx 2022

Please send your newsletter  
items to: [rotoitinews@gmail.com](mailto:rotoitinews@gmail.com)

This newsletter was produced  
with the help of the Rotoiti  
District Community Council,  
Department of Conservation and  
Mark & Tania Gill.

You can download a copy of  
previous newsletters from  
[www.lakerotoiti.school.nz/newsletters](http://www.lakerotoiti.school.nz/newsletters)



## Lake Rotoiti School News

Ngā mihi o Matariki, te tau hou Māori - Happy Matariki.

What is Matariki?

Traditionally Matariki was a time for families to mourn and passed away in the previous year. It was also a time to share harvested from past seasons – as it was too cold for planting winter months.



It's great to be able to celebrate a uniquely New Zealand event. Last Monday the Junior Children wove Matariki stars with Fran, and on Thursday all of the children spent the afternoon building a Matariki mobile each. Many thanks go to Murray from Mitre 10 for supplying the kits for this and to Danny, Faye and Ina for helping to build them.

For the last two weeks and for the rest of the term we are going on Nature walks every Wednesday with Frith. The children are learning about the flora and fauna of our local forest as well as the new school forest area.

We are moving into the business end of the term and reports will soon be going out. We are also becoming very excited about skiing next term.

On Thursday we farewelled Avani and Nihalii as they move to their new home in Richmond the best in their new place.



## Coming up

### 2 July 5pm Community Potluck Dinner.

Community Hall. Space limited to 200. Ph Linda 0273758178 or Debbie 027314225. See attached flyer.

### 4 August 6pm Lake Rotoiti School (Post) Matariki Quiz – Take 2.

Alpine Lodge. See attached flyer.

Next term we welcome 2 new faces: Abel in the Junior Room, and Isaac in the Senior room. We also welcome back Fraser, Noah and Lachie.

Hopefully some progress will be seen very soon on the Pool changing sheds. We also hope to see the builders return next term to finish the refurbishment project, although this depends very much on decisions made by the Ministry of Education. If they do return, access from the Eastern gate will be blocked again until the job is completed.

Hopefully you are getting your team together for the Quiz Night on Thursday August 4<sup>th</sup>. Book your spot by emailing Dominique at [office@lakerotoiti.school.nz](mailto:office@lakerotoiti.school.nz) and pay online. No tables will be allocated on the night. It is always a great social event on a cold mid-winter.

Nga mihi,  
Mike and Miriam.



## Nelson Lakes Winter Avalanche Risk Assessments

Obviously winter has arrived, and with the recent deluge of snow our avalanche risk escalated to EXTREME for a few days. It has now settled down to low risk. There was lots of snow movement as it settled, and some nice slab avalanches are visible along the St Arnaud Range, with the gully south of Parachute Rocks on the St Arnaud Range track being one of the most obvious.

ASAP after the big snow, a small team from DOC and Mountain Safety Council flew around the Nelson Lakes backcountry to assess the avalanche risk.



*Mountain Safety Council contractor Matt Wilkinson in a snowpack inspection pit near Mt Mahanga (photo Blair Williams)*

John Tait hut and Hopeless hut, which are located in known avalanche paths, were closed for a week or so. Now the avalanche risk has lowered, they have reopened. If you are heading into the park, note that several backcountry huts have very low or no firewood stocks – be prepared to stay in a hut without heating. Water may

well be frozen and not available inside huts. Ensure any taps you turn on, are turned off again. Angelus Hut is only accessible by experienced trampers able to use crampons and ice axes. There is widespread snow up to and over 1metre deep, with windblown snow in places of up to 3metres.



*Angelus hut and Rotomaninitua (Lake Angelus) on 17th June (photo Blair Williams)*

## Handy links for planning winter backcountry trips

NZ Avalanche Advisory - Nelson Lakes: provides the avalanche danger scale for High Alpine, Alpine and Sub Alpine with ratings and description of risk.

<https://www.avalanche.net.nz/region/13>

Be avalanche alert in Nelson Lakes National Park – avalanches usually occur in Nelson Lakes National Park from May to November. <https://www.doc.govt.nz/parks-and-recreation/places-to-go/nelson-tasman/places/nelson-lakes-national-park/be-avalanche-alert-in-nelson-lakes/>

NIWA Weather – Nelson Lakes National Park: <https://weather.niwa.co.nz/parks/Nelson%20Lakes%20National%20Park>

## RDCC Meeting – Wednesday.

TDC would like to make a presentation at the start of the next meeting on the proposed plan changes for some land in Massey Street in the village.

This will be the first of the two Zoom meetings and will be hosted by TDC staff so initially you will need to join via this link:

Topic: St Arnaud Plan Change - Council Presentation Meeting

Time: Jun 29, 2022 07:15 PM

Join Zoom Meeting

<https://us02web.zoom.us/j/83219762421?pwd=YnhlTFBV MFVJazZ2akVWemp4UWk2Zz09>

Meeting ID: 832 1976 2421

Passcode: 4hFrq5



**Servicing Murchison, St Arnaud  
and surrounding areas**  
**Thursdays**

**Plumbing - Gasfitting - Drainlaying**  
**Shared travel costs**

**Phone or email to book your job**  
**03 543 8090 or 0800 301507**  
**info@tuffnell.co.nz**

***We thank all our existing clients for  
their continued support"***



## A good electrician.



- Industrial, commercial and domestic
- Generator installs and repairs
- Electrical motor installs and repairs
- Pump installs and repairs
- Power tool repairs
- Automation and control
- Solar and offgrid installs and repairs
- Motorhome installs and repairs
- Dairy electrical and pumps

**Shane Steel**

**027 320 2335**

[shane@agoodelectrician.co.nz](mailto:shane@agoodelectrician.co.nz)

Servicing St Arnaud and greater Tasman district

## Church Notices

**Lake Rotoiti Chapel, Sundays 10.30am**

Rotoiti Street, St Arnaud

Services are run by locals and are  
non-denominational.

Everyone welcome

Contact Ali/Sue 03 5211 110

**Rotoiti Hub, Sundays 2pm**

Local Spirit-led Christian worship, equipping and  
encounter.

Contact Nigel & Sarah Calder 0274413776 for  
details.



Local Carpenter now available for all your building requirements  
Design work, estimates, at no charge  
10 year Halo Guarantee for new builds

*Design by inspiration  
Built with love and care by Santosh*

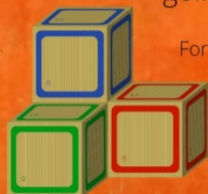
Call Santosh: 021323228  
or  
Email: livingspacenz@yahoo.co.nz

## PLAYGROUP

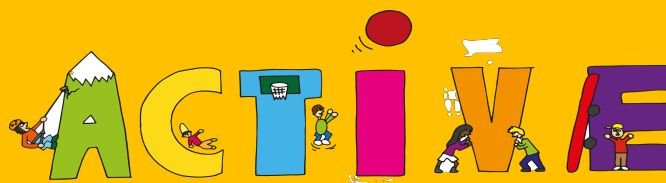
Playgroup meets Tuesday mornings  
10am - 12pm at the community hall, all  
preschoolers welcome.

Many thanks to St Arnaud  
Rural Woman for your on  
going support

For any inquiries please contact  
Kirsten on 0220445829



## BE GET STAY



### Regular activities in and around St Arnaud

**"Circuit Breakers"** exercise group  
Monday, Wednesday, Fridays 10 am,  
Community Hall  
All welcome, gold coin donation  
Gael 027 280 4078

**Badminton / table tennis**  
Community Hall on Wednesdays at 7pm  
All welcome – rackets available. Gold coin  
donation towards hall and shuttle cocks.  
Nicky or Ed Shaw 521 1106

**Pilates**  
Community Hall on Thursdays at 5pm. Contact Lisa  
021 202 4034

**Seido-Karate**  
Community Hall  
Tuesdays 6pm - kids & beginners  
Thursdays 6 pm – General Class  
Graeme 021 0859 4088. Gold coin donation

### **CONTRIBUTING TO THE NEWSLETTER**

Please send your contributions in the following formats:

- Advertising and notices sized to fit the newsletter columns. Accepted formats: MSWord, PDF or JPG.
- Full page ads incur a fee of \$30 Please pay at the Rotoiti/Nelson Lakes Visitor Centre.
- Articles: plain text submitted in MS Word format, or in the body of an email.
- Photos: JPG files up to 5MB, attached to an email (not embedded in text).

Contact: [rotoitinews@gmail.com](mailto:rotoitinews@gmail.com)