

This newsletter is produced by a small volunteer editing crew to help keep our community connected and informed. We welcome your contributions!

Please send your newsletter items to: rotoitinews@gmail.com

Deadline for next issue:
5pm Friday 4th April 2025

You can view and download previous issues at www.lakerotoiti.school.nz/newsletters.html



Coming up

14th April 10.30 to 12.30: TDC Meet the Planners public drop-in session

Thursdays 10am - 12pm Playgroup. Community Hall. Ph. Anna 0277229652. Gold coin donation.

Thursday afternoons Sailing. Kerr Bay till April 3rd.

Photos: Yellow mistletoe, R. O'Neill. Rotoiti eels, D. Bauer. Mt daisy *Celmisia semicordata*, D. Price.

Note: regular notices about fitness related activities are listed in a separate box later in the newsletter

Lake Rotoiti School News

Kia Ora

The days are getting shorter and much colder now, which means that we will close the school pool at the end of next week. Friday the 28th will be the last day for the season. Thank you for all of the volunteers who helped keep it open for the summer holidays and we are already looking forward to Term 4 when we can open it up again.



We are welcoming Luke and Monte to Lake Rotoiti School. Both boys are settling in, learning about our school routines, and making friends. We're lucky to have you both attending our school.

Lake Rotoiti Community News

We had two huge weekends in St Arnaud with the classic boats and power boats. As you are aware our fundraising group Kea Kai organise the food tent each year. This year they managed to raise \$13,700.00 between the two weekends. This money will go towards school camp and skiing lessons for all children. We believe that every child should have the opportunity to attend school camp and money should not be a barrier, therefore families and whānau do not have to pay anything towards it, and every child can join and enjoy.

Kea Kai couldn't do this without help from parents, grandparents, community members, Rural Women and extended whānau who donated their time and food to make this a possibility. A massive thank you to everyone involved!

Speaking of school camp. Both classes are off to Mistletoe Bay for four days in a couple of weeks. We are meeting the children, teachers, and some parents of Waitaria Bay School there for a combined camp. We have built a nice relationship with this school over the last few years and believe that small, rural school should stick together. Camp preparation is in full swing and the children are getting excited.

Maruia School had their camp in St Arnaud last week and we combined the two schools for some sailing lessons, bbq lunch, and general water shenanigans. This was great fun and I am sure we can keep this relationship going too.



Our little Optimists recently received some TLC in form of brand-new sails, thanks to St Arnaud's Rural Women. The boats look fantastic and I'm sure they are faster now too. A huge thank you to Rural Women for your donation. We will try to have two more Thursday Sailing Evenings at the lake, but this is weather dependent.



Ngā mihi
Mike and Miriam



**Servicing and supporting Saint
Arnaud, Howard, Gowan &
surrounding area's weekly**

"If its urgent, we'll be there!"

**Plumbing – Gasfitting – Drainage –
Blocked Drains – Leaky taps –
Repairs - Spouting- Hot water -
Shared travel**

**Phone, email or Facebook
Messenger us to book your Job or
Free Quote**

Phone - 03 543 8090

email - info@tuffnell.co.nz

***"We thank all our rural clients for
their ongoing continued support"***



It has been a busy summer season for DOC staff and volunteers. The pace is set to continue in April with planned pest control operations (see later this newsletter) and a joint Great Spotted Kiwi (roroa) translocation,

Roroa translocation

The Friends of Rotoiti and the Department of Conservation together with Ngāti Apa ki te Rā Tō and Manawhenua ki Mohua are supporting a final kiwi translocation to Rotoiti/Nelson Lakes National Park late March – early April. This will signify the end to a long-standing translocation. Please be mindful of dogs in and around the village and please report dogs in the National Park to the Visitor Centre. Protection of roroa is paramount for a thriving population well into the future.

Wasping roundup

DOC are grateful for the help and support of Friends of Rotoiti, the Mountain Bike Trails Trust, the Nelson Speleological Society, and the wider community who contributed to the wasp control programme over the past two months.

Upper Travers Hut



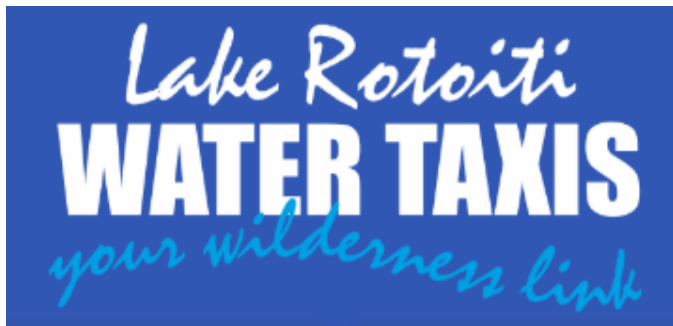
Last week a team of DOC rangers and volunteers spent time giving the Upper Travers Hut a spruce up. The team had to work around the rain and snow and managed to complete all their scheduled work, including painting indoors and general maintenance outdoors.

The logo for Infinity Plumbing & Gas, featuring a stylized infinity symbol in blue and red above the text 'INFINITY PLUMBING & GAS' in blue and red.

- Plumbing and Gas
- New Builds & Reno's
- Hot water issues
- U.V. and filters
- Water leaks & more

027 371 0434
03 922 9353
www.infinityplumbing-gas.co.nz

A small portrait of a man with a beard, wearing a dark shirt, positioned in the bottom right corner of the advertisement.



Hello St Arnaud

I hope you all have had a great summer,. Here at the water taxi it wasn't nearly as busy as last season however it has been nice and relaxing,.

Anyway on with the news,.

The scheduled ferry service will have its last sailing for the season at the end of April,.

The ad-hoc water taxi will still be available however,.

This year we are not going to be operating Queen's/King's birthday or Matariki weekends,.

We will be back into it again for July school holidays,.

This year unfortunately I have been ripped off a few times,. Often it's passengers going from the head of the lake to west bay and leaving there wallet in the car,. The vast majority will swing past the caravan and pay however not all do,. Please be aware that people who do not have a means of payment with them will not be allowed to board,.

I currently don't have paywave, . This will change soon even though I personally am against it,.

People who wish to tap and go will be paying for the privilege!.

So if you are not going to pay by cash bring down a stock standard EFTPOS or debit card and swipe it!!!.

Also folks and this is more for organisations, . If you send me a email and it is important please followup with a text or call, . Unfortunately I tend to miss the odd important email which happened just recently! ,.

A big thankyou to my helpers with the canoes, Alex, Issac, Fraser, Noah and Shepherd, . We had few laughs with one of the older boys trying to drive my manual vehicles, . I refuse to own a Auto!! (Or a used jap import for that matter)

All the best

Kind regards Hamish

PRO~ENG
www.projectengineeringnz.com

-Welding and Metal Fabrication

-CNC profile cutting

Email: proengnz@gmail.com

Phone Chris: 027 507 1234

CONTRIBUTING TO THE NEWSLETTER

Please send your contributions in the following formats:

Advertising and notices sized to fit the newsletter columns. Accepted formats: MSWord, PDF or JPG.

Full page ads incur a fee of \$30 Please pay at the Rotoiti/Nelson Lakes Visitor Centre.

Articles: plain text submitted in MS Word format, or in the body of an email.

Photos: JPG files up to 5MB, attached to an email (not embedded in text).



GENERAL CONTRACTING

Putting off those odd jobs around the house or bach?
Have you cleaned your gutters or cleared your section
ready for fire season?

Brush cutting || Section clearing || Tree trimming
Gutter cleaning/repair || Low flammability tree planting
Landscaping || Indoor/outdoor painting
General repairs || Starlink installs || Tech setups
And more!

Free Quotes



St Arnaud
Tasman Region



Thomas Reid
0225257864

BE | GET | STAY



Regular activities in and around St Arnaud

Monday and Wednesday 10am Casual exercise group. Community Hall. Gold coin koha. Julie 0272385597

Mondays 7pm Badminton. \$3 per person to go towards hall and shuttle-cocks. Racquets available, all welcome! Ed 03 5211106

Seido-Karate

Community Hall

Tuesdays 5pm - kids & beginners

Thursdays 5pm – General Class

Graeme 021 0859 4088. Gold coin donation

Church Notices

Lake Rotoiti Chapel

Sundays 10.30am

Rotoiti Street, St Arnaud

Services are run by locals and are non-denominational. Everyone welcome.

Contact Ali/Sue 035211 110

Rotoiti Hub

Sundays 10am

Local spirit-led Christian worship, equipping and encounter.

More details and enquiries:
Nigel/Sarah 0274413776
or Kay 027 3072820



a service of the
Ministry for Primary Industries

INNOVATIVE FARMING SOLUTIONS

for people, place and planet forum

Photo credit: NZ Story
Paul Sutherland
Photography

Thursday 17 April, 9.30am - 3.30pm, Moutere Hills Community Centre

Format:

- Presentations from key stakeholders and organisations
- Q&A sessions and table talk
- Organisation stands

Topics:

- Farm data management tools
- Integrated farm planning
- ETS possibilities
- Pest management techniques
- Smart energy.... and more!

Put more money in your back pocket and look after your land for future generations.

Email dana@motuekacatchment.org.nz
for more information and to register



MEET THE PLANNERS DROP-IN SESSIONS



Tasman's Draft Change 1 to the Regional Policy Statement and Draft Change 81 to the Tasman Resource Management Plan

Planning for growth – what's happening?
Tasman's future: More homes, more jobs,
stronger communities.

Infrastructure and services – planning
for the future. Smart growth needs
good infrastructure to support jobs and
business growth.

Medium-density housing – more homes,
more choices. It helps first-home buyers,
retirees, and families find suitable
housing.

Papakāinga – supporting Māori housing.
Strengthening whānau, land, and culture.

Easier to house rural workers. But should
we allow for more rural homes?



Scan the
QR code to
find out
more

Plan Change 85 Natural Hazards Issues and Options

Natural hazards issues and options:
Talk to the experts about the planning
issues and options available to avoid and
mitigate the effects of natural hazards.

Natural hazard mapping: Use the natural
hazards viewer to better understand
hazard locations.

Increase your understanding of how
natural hazards affect homes and
businesses, and how to build resilience.



Scan the
QR code to
find out
more

MEET THE PLANNERS DROP-IN SESSIONS



Tasman's Draft Change 1 to the Regional Policy Statement and Draft Change 81 to the Tasman Resource Management Plan and Plan Change 85 Natural Hazards Issues and Options

At these sessions, you'll have the opportunity to engage with Council planning, infrastructure and technical staff. The sessions are not limited by location, so you can ask about anywhere in the district. You can listen to a short introduction to the plan changes at the times below or view them online at Shape Tasman.

Tasman District Council

189 Queen Street, Richmond.

Saturday 5 April, 1.00 pm – 4.00 pm.

A short introduction to the plan changes will be presented by Council at 2.00 pm.

Brightwater Public Hall

Lord Rutherford Road, Brightwater.

Monday 7 April, 10.00 am – 1.00 pm.

A short introduction to the plan changes will be presented by Council at 11.00 am.

Wakefield St Johns Centre

120 Edward Street, Wakefield.

Tuesday 8 April, 3.00 pm – 6.00 pm.

A short introduction to the plan changes will be presented by Council at 4.00 pm.

Māpua Community Hall

72 Aranui Road, Māpua.

Wednesday 9 April, 10.00 am – 1.00 pm.

A short introduction to the plan changes will be presented by Council at 11.00 am.

This session is specific to RPSC1, PC81, and PC85. The Mapua Masterplan is not included in this session.

Motueka Library Te Noninga Kumu

32 Wallace Street, Motueka.

Saturday 12 April, 1.00 pm – 4.00 pm.

A short introduction to the plan changes will be presented by Council at 2.00 pm.

Lake Rotoiti Community Hall

22 Main Road St Arnaud.

Monday 14 April, 10.30am – 12.30pm.

A short introduction to the plan changes will be presented by Council at 11.30 am.

Murchison Sport Recreation and Cultural Centre

4 Hampden Street, Murchison.

Monday 14 April, 4.00 pm – 6.00 pm.

A short introduction to the plan changes will be presented by Council at 5.00 pm.

Golden Bay Recreation Centre

2032 Tākaka Valley Highway, Tākaka.

Wednesday 16 April, 2.00 pm – 5.30pm.

A short introduction to the plan changes will be presented by Council at 3.00 pm.

03 543 8400
tasman.govt.nz

 **tasman** district council | Te Kaunihera o **te tai o Aorere**

Consulting on the protection of native species in Nelson Lakes National Park

The Department of Conservation (DOC) wants to reduce possums, rats and stoats to protect native species

Native wildlife needs protection here

Native species are under threat from rats, stoats and possums. Without protection, we risk losing the unique natural heritage and biodiversity within Nelson Lakes National Park.

This area is home to three endemic species of mistletoe (yellow, red and scarlet) which are all threatened or at risk of extinction. Possums threaten mistletoe by browsing it. While rats and stoats predate the birds and lizards that are responsible for pollination and spreading mistletoe through our forest.

There are many native species in these habitats that are at risk and need protection from introduced predators. These include kākā, kea, [roroa](#) great spotted kiwi, long-tailed bats [bekapeka](#), native snails and Nelson green gecko.

The plan to control introduced predators

To protect native species, our team in DOC Rotoiti/Nelson Lakes District is planning to reduce predator numbers across 34,099 ha of the forest and alpine environments.

The most effective tool to control predators over large areas is bait pellets containing sodium fluoroacetate (1080). Helicopters distribute bait across the forest along pre-determined and monitored flight paths. This is the only way to control possums, rats and stoats across vast, remote and rugged landscapes.

Ground-based trapping and bait stations are effective in smaller more accessible areas. However, the number of predators can overwhelm trapping networks.

An aerial 1080 operation adjoining the Rotoiti Nature Recovery Project (RNRP) is needed to protect this unique refuge for native species. This operation builds on a 25-year investment and legacy of predator control to protect the area.

The last 1080 operation was almost 5 years [ago](#) and this provided an initial reduction in predator numbers. However, possum populations can return to [preoperation](#) levels [quickly](#) so it is important to suppress possums continually to protect the forest.

Programme. We are protecting the remaining populations of threatened native species while tools



Red Mistletoe. Photo: DOC

This work is part of DOC's National Predator Control continue to be developed to eradicate possums, rats and stoats across New Zealand.

Monitoring native species

Through sustained predator control, there is a big increase in breeding success for birds, their food source is more abundant, and the forest canopy is healthier.

We know from monitoring in the area that an operation will help reduce predators and protect native birds like kiwi during their breeding season.

Great spotted kiwi/[roroa](#) are the largest of New Zealand's kiwi species. Despite their size, chicks are vulnerable to stoats until they weigh around 1kg. [Roroa](#) populations in Rotoiti have been growing and kiwi are migrating deeper into the National Park away from the area their chicks are protected by trapping. It is important we protect the areas they breed with a predator control operation.

In the recent aerial 1080 predator control operation in nearby Rainbow, we monitored rats and stoats before and after the operation. We found that predators were reduced to undetectable levels following the operation.

Key facts about 1080

1080 is a manufactured, biodegradable toxin. Its active ingredient, fluoroacetate, is found in poisonous plants in

Australia, Africa and Brazil. It is also found at lower levels in our native plants.

1080 bait is broken down naturally in the environment by micro-organisms, fungi and plants into harmless compounds and does not leave permanent residues in soil, water, plants or animals.

The Department of Conservation complies with all relevant regulations and takes a precautionary approach to the application of 1080.

Operations begin with the distribution of pre-feed non-toxic bait to prepare possums/rodents to eat the toxic bait that will be applied afterwards.

Learn more about why we use 1080 to control introduced predators.

www.doc.govt.nz/nature/pests-and-threats/methods-of-control/1080

Proposed timeframe

Predator control operations are done when monitoring shows predators have reached levels that threaten the populations of native species. Operations are weather dependent. At this stage, the operation in Nelson Lakes National Park is planned to occur in April – May 2025.

Have your say

DOC consults with iwi, hapū and key stakeholders including adjacent landowners for predator control operations where 1080 is the proposed method. We aim to understand people's views and answer any questions they may have.

The DOC team at Rotoiti/Nelson Lakes and our contractor Vector Free Marlborough would like to contact you to discuss the proposed operation. This includes how you think it could affect the following:

- You and your wellbeing, native flora and fauna, natural resources and your ability to protect, manage and use these resources.

As part of this consultation process, we will consider what we can do to mitigate any effects.

Consultation next steps

Your feedback during consultation will help guide decisions about the operational plan.

DOC or our contractor will update you about the outcomes of the consultation and any changes to the treatment boundary plan. This update will be in the form of a notification fact sheet, and it will include a more precise timeframe for the operation.

Use of 1080 requires permission from the Ministry of Health. DOC is delegated authority by the Environmental Protection Agency to decide applications for permission to use 1080 on land administered or managed by DOC.

DOC ensures that all legal and policy requirements are met, and that any potential risks of the operation are managed.



Kiwi. Photo: DOC

Managing risk

1080 is poisonous to humans, domestic and game animals. In areas where the toxin has been applied, dogs are highly at risk until poisoned carcasses have disintegrated. This takes four-to-eight months or longer. Seek veterinary advice for suspected poisoning of domestic animals.

Risks can be eliminated by following these rules:

DO NOT touch bait

WATCH children at all times

DO NOT EAT animals from this area or within the buffer zone outside the treatment boundary. The standard buffer zone is 2 km for deer and pigs, 200 m for rabbits, and 1 km for hares, tahr, wallabies and possums.

Poison baits or carcasses are DEADLY to DOGS

Observe these rules whenever you see warning signs about pesticides. These signs indicate pesticide residues may be still present in baits and poisoned carcasses. When signs are removed this means you can resume normal activities in the area. Always report suspected vandalism or unauthorised removal of signs.

If you suspect poisoning, please contact:

- Your local doctor or hospital
- The National Poisons Centre: 0800 764 766 (urgent calls) or 03 479 7248 or dial 111
- Seek veterinary advice for suspected poisoning of domestic animals

Map of planned predator control area within Nelson Lakes National Park

The map on the next page shows the planned area of 34,099 ha for predator control.

For more information

Please contact:

Operational planner, Rotoiti/Nelson Lakes [District](#)
3 View Road, St Arnaud 7053. 03 521 1806
nelsonlakesvc@doc.govt.nz

AND/OR Vector Free Marlborough Rentokil Initial Limited, PO Box [5171 Springlands](#), 7241.

0508 548 008

vfm.communication-nz@rentokil-initial.com

Visit the DOC website:

See more information about DOC's National Predator Control Programme.

www.doc.govt.nz/our-work/national-predator-controlprogramme

Learn more about why we use 1080 to control introduced predators. www.doc.govt.nz/nature/pests-and-threats/methods-ofcontrol/1080

See operational updates and detailed maps of predator control on public conservation land

www.doc.govt.nz/nature/pests-and-threats/pesticidesummaries

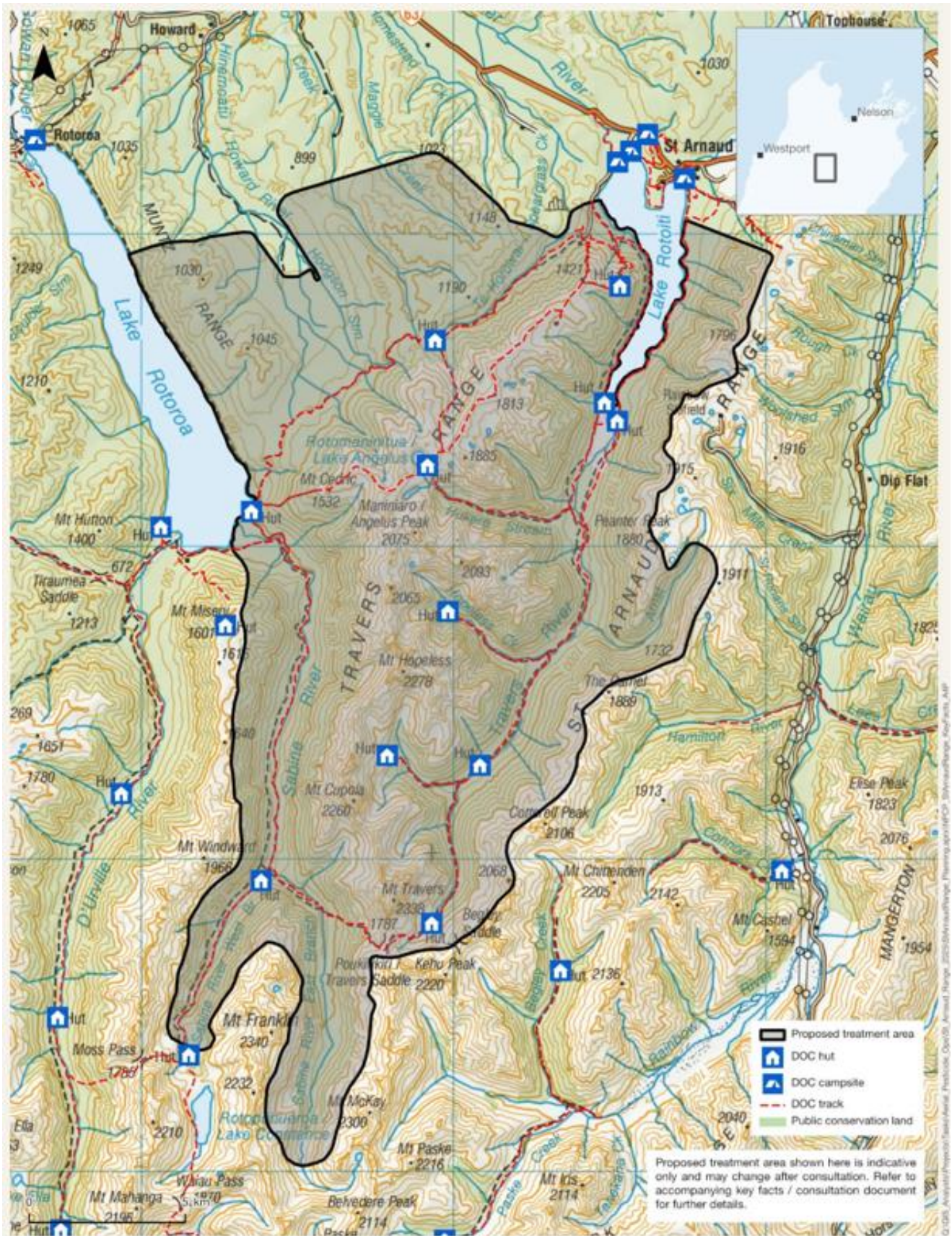
See updates about track access and safety

www.doc.govt.nz/parks-and-recreation/know-beforeyou-go/alerts

Learn more about Predator Free 2050

www.doc.govt.nz/nature/pests-and-threats/predator-free2050

Learn more about the Rotoiti Nature Recovery Project <https://www.doc.govt.nz/parks-and-recreation/places-togo/nelson-tasman/places/nelson-lakes-nationalpark/rotoiti-nature-recovery-project/>



St Arnaud Range - Key Facts

Aerial Predator Control 2025

Proposed treatment area: 34,099 ha

