

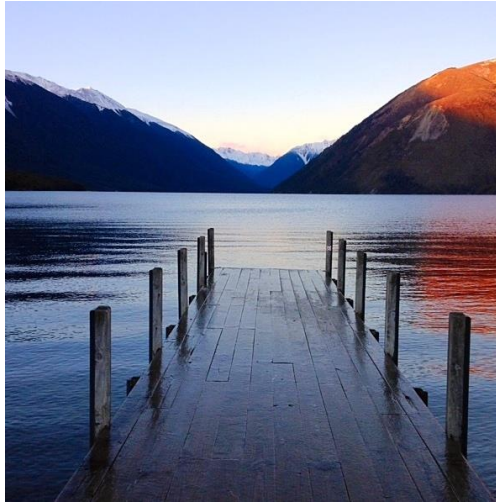
Deadline for next issue:
Friday 19 May 2017.

Please send your items for inclusion
to rotoitinews@gmail.com

This newsletter was produced with
the help of the Rotoiti District
Community Council, Department of
Conservation and Mark & Tania Gill.

You can download a copy of previous
newsletters from:

www.lakerotoiti.school.nz/newsletters



And it's goodbye from me ...

Moving here was a very easy decision; leaving will be very hard.

This has been my home for 19 years and, at various times, two of my sons have made their homes here. It is the only place my grandchildren know as 'grandma's place'.

This is the community that was there for me when Allan was disabled with MND, enabling him to stay in this beautiful environment for many years. It is the community that has sustained me through my grief at losing him.

But, now it is time for me to move on. I am looking forward to new adventures in the North Island, catching up with old friends and family.

St Arnaud/Lake Rotoiti will always be with me.

Thank you all for your friendship and support.

Kia Ora

Bobbie Poll

Coming up

Sunday 28 May, 3.00pm

Community Hall. Worship afternoon. Contact Nigel & Sarah Calder on 027 441 3776.

Regular events

Mondays, 7:00pm

Badminton Community Hall. Racquets available. \$3.00. Contact Ed or Nicky Shaw ph 521 1106

Last Monday of the month 7:00pm. Camera Club at Rotoiti School Library.

Contact Nicky Crawford
nicolacrawford1968@gmail.com

Mon, Wed and Fri @ 10.00am

"Circuit Breakers" training at Community Hall. Everyone welcome no matter your fitness. Gold coin for hall donation box. Phone Gael 027 280 4078.

Tues and Thurs 7.00pm

Seido Karate at Community Hall, Beginners welcome. Phone Graeme 521 1022

Wednesday 7.00pm

Ultimate Frisbee, Basketball and Volleyball. Community Hall. \$2.00. Contact Julie at phone 5211874.

Wednesday s, 8.00pm

Dancing in the Dark Meet at Kerr Bay shelter. Contact Emma 027 204 2322

Sun @ 10.30am

Rotoiti Chapel – Sunday Service. Everyone welcome

Lake Rotoiti School News

Welcome back to Term 2! It was lovely to see all the children back safe, happy and well-rested after the break and eager to share stories of their adventures.

Many of you who are in the village regularly will have seen that work on the school swimming pool has begun and that the old pool has now been demolished and removed. The Aquaflow team are currently framing the new pool ready for the concrete pour which should happen fairly soon. The current aim is to have the main construction phase completed as soon as possible with the break for the winter and then finishing stages completed in the spring. We are aiming for a 1st November completion! Don't forget, the pool will be heated, so we're hoping for a consistent and perhaps prolonged swimming season each year.

We realised last week that some people may think that the fence that has been erected is permanent – it's just there for the children's safety during the construction of the pool; Aquaflow will be returning our field to its previous state at the end of the build and the pool will be fenced with 1.8m high pool fencing which should ensure safety, whilst being a little easier on the eye!

This term, our main event will be a Matariki walk from the school to the Lake. We aim to revitalise this event, which the children have enjoyed immensely in the past, whilst giving us the chance to learn some important customs and myths and celebrate the Maori New Year. Staff will be working closely with Tracy Grose at DOC to make this event fun for all the community – more details to follow.

The other school news this week is that Giles is leaving at the end of Week 6 this term. Please have a read of his letter to the community below.

Keep warm and safe!

Giles, Nicky, Emma, Tracy, Stephanie and Fran



Visitor Centre winter hours

Monday to Friday 8:00 to 4:30 pm

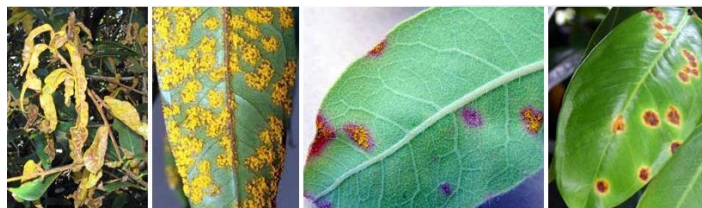
Saturday and Sunday 9:00am to 4:00pm

Open seven days a week over the winter for:

- hut tickets and annual hut passes
- tramping advice
- residential and farm fire permits,
- hunting and dog permits for public conservation land
- a great selection of books and gifts
- tramping equipment – gas, stoves, dehydrated food, and
- tourist information.

You'll get a friendly welcome from Visitor Centre staff. Phone 03 521 1806.

Biosecurity Alert - Myrtle Rust -



Myrtle rust is a fungal disease that severely attacks plants in the myrtle family including pōhutukawa, mānuka and rātā. It was found on mainland New Zealand in early May 2017.

Myrtle rust (*Austropuccinia psidii*), also known as guava rust and eucalyptus rust, is a serious fungal infection that could have serious impacts on a wide range of plants in the myrtle family. It was found on mainland New Zealand for the first time in May 2017.

It was detected on pōhutukawa trees on Raoul Island in the Kermadec group in March 2017.

It can be found in many parts of the world. The rust has rapidly spread on Australia's east coast.

Look out for myrtle rust in New Zealand and contact MPI on 0800 80 99 66 if you see it.

New Zealand has a number of species in the myrtle family at risk if myrtle rust arrives.

They include natives such as pōhutukawa, kānuka, mānuka and rātā, as well as commercially-grown species such as eucalyptus, guava and feijoa.

It is likely that myrtle rust will continue to find new susceptible species in New Zealand.

Myrtle rust attacks young, soft, actively growing leaves, shoot tips and young stems. Initial symptoms are powdery, bright yellow or orange-yellow pustules on leaves, tips and stems.

The developing lesions may cause a deformation of the leaves and shoots, and twig dieback if the infection is severe. It can also affect flowers and fruit. Infection may result in plant death.

Myrtle rust is notoriously difficult to control. However, it was caught early on Lord Howe Island and may have been controlled there.

Unfortunately by the time that the rust pustules are visible on plants, spores are already spreading.

It will be extremely difficult to eradicate in New Zealand.

What it looks like

Myrtle rust generally attacks soft new growth including leaf surfaces, shoots, buds, flowers and fruit.

Symptoms to look out for are:

- bright yellow/orange powdery patches on leaves
- brown/grey rust pustules (older spores) on older lesions
- leaves that are buckled or twisted and dying off.
- lesions get bigger and produce masses of bright yellow spores.

Keep an eye on the myrtaceous plants in your garden including: pōhutukawa, rātā, kānuka, mānuka, swamp maire, ramarama, rōhutu, eucalyptus, guava, feijoa, pacific rātā, bottlebrush, monkey apple, lilly pilly.

The fungus attacks the new growth of leaves and shoots, and in some species also the buds and fruit of these plants.

If you are traveling from Australia to New Zealand, make sure your shoes, clothing and luggage are free of rust spores which may be visible as yellow dust.

What to do if you see myrtle rust

- Don't touch!
- Don't collect samples as this might spread the disease.

- If you can, take a photo of the rust and the plant it's on.
- **Phone MPI's exotic pest and disease hotline 0800 80 99 66.**
- If you accidentally come in contact with the affected plant or the rust, bag your clothing and wash clothes, bags and shoes/boots when you get home.

Your reports of suspected cases are vital in helping determine where myrtle rust is in New Zealand, how far it has spread and whether eradication, containment, or even slowing the spread is feasible.

DOC is working closely with the Ministry for Primary Industries (MPI) to manage myrtle rust in New Zealand. Early detection of any outbreak in New Zealand will be vital to any attempt to manage it.

Friends of Rotoiti Feral Cat Control



It is important to distinguish between feral and domestic/pet cats. Feral cats have been living in our district since early releases by farmers trying to control the rabbit population. These releases began in the early farming days and carried on until approximately 20 years ago. These cats have very successfully colonised our area, as they have in much of NZ's remote farmland and wilderness.

A draft document by Members of the National Cat Management Strategy Group (NCMSG) estimates we now have at least 2.5 million feral cats in Aotearoa/New Zealand. They are truly wild and successful predators, arguably our apex imported predator. Google any of the web sites under "Feral Cats NZ" for further information.

Feral cats have been trapped by a sub-group of FOR, (Friends of Rotoiti) over the past 10 years. March, April, May and June are the main months for catching Feral Cats, as they seem to wander during these months, so once again, please, if you own a cat put a collar on it.

A recent study of domestic cats in Wellington showed they can range over 80 Ha.

For more information see the Friends of Rotoiti web site www.friendsofrotoiti.org.nz

Cat Census

DOC is undertaking a census of domestic/pet cats to support Friends of Rotoiti's trapping programme.

Please send a photo showing your cat's markings, its name, your address and phone number, and a description of any distinguishing features or marks on the cat to Tracey Grose, Senior Community Ranger, at tgrose@doc.govt.nz or call on 03 521 1072.

There will be 'lucky draw' prizes for cats entered before Monday 22 May.

Social Badminton

Badminton will start up again for the season on Monday evenings at 7pm at the Community Hall.

\$3 per person.

All welcome. Rackets available for loan.

Contact Ed or Nicky Shaw ph 521 1106

Guitar lessons wanted

Is there anyone in the local community who would be interested in giving my son weekly guitar lessons?

If so, please call Anna 5211982. Thanks.

Reiki Healing

Reiki is a natural, hands on system of energy healing.

Reiki relieves energy blockages and imbalances to support health, healing and well-being. Reiki treats the whole person including body, emotions, mind and spirit.

Reiki adapts to the natural needs of the receiver.

Reiki:

- Clears toxins
- Relieves pain
- Strengthens the immune system
- Relaxes and reduces stress
- Improves sleep
- Strengthens self esteem

- Accelerates natural healing
- Works on both people and animals

If you are interested in having a session or to learn more, contact Gael at 03 9700 994 or

Skyfarm@farmside.co.nz



Saturday 13th May, 9am
Lake Rotoiti Community Hall

**Come Dressed in
something Pink**

(if you can!!)

**Tickets' \$10 per
person**

*Tickets have a lucky draw number on them so
bring it with you*

**All profits to
Breast Cancer Foundation NZ**

**Purchase your tickets from:
Nicky Shaw, Stephanie Coote,
Marg Anderson, Jan Thomson or
Sue Nicholls**

For more info ring Sue 5211110.

Ultimate Frisbee & Basketball & Volleyball

*Wednesdays at 7 pm at the
Community Hall*

More info from Julie at
robilliard@farmside.co.nz or
phone 5211874

\$2 per person to Hall donation box.



St Arnaud Camera Club

Meets at 7 pm on the last Monday of every
month in the Rotoiti School
library.



Everyone with an interest on
photography is welcome.

Bring your effort/s on a USB
thumb.

For more info, contact Nicky Crawford
nicolacrawford1968@gmail.com.



Rural Education Activities Programme (REAP)

Courses available for 2017

Expression of interest

Sausage making, bread, quilting, fermented
foods, pasta.

There are no dates set yet, it depends on
numbers interested.

Phone Marg Anderson 5211864 or
avarestbnb@xtra.co.nz if you are interested
in any of these courses.

Everyone is welcome to a Worship
Afternoon at 3.00pm on Sunday 28 May at
the Community Hall

Live music with refreshments to follow.

Hosted by the Rotoiti Hub.

All welcome.

Contact Nigel & Sarah Calder on 027 441
3776 for more information.

LAKE ROTOITI COMMUNITY HALL TRIENNIAL MEETING

The community hall committee has its Triennial
Meeting on:

**Friday 12 May 2017, 7.30pm at the Community
Hall**

This is the meeting where we officially elect or
confirm officer positions on the committee.

Everyone welcome.

If you're interested in being involved in the running
of the hall now is the time to speak up.

The position of secretary will be going begging this
time; if anyone is interested in that role then you'll
be welcomed with wide arms!

Contact - Phil Borlase on 521 1847

Contributing to the newsletter

Please send your contributions in the
following formats:

- Advertising and notices sized to fit the
newsletter columns. Accepted formats:
MSWord, PDF or JPG.
- Full page ads incur a fee - \$30 (b&w) or \$70
(colour). This is a contribution towards
photocopying costs. Please pay at the
Rotoiti/Nelson Lakes Visitor Centre.
- Articles: plain text submitted in MS Word
format, or in the body of an email.
- Photos: JPG files up to 5MB, attached to an
email (not embedded in text).

Contact us: email rotoitinews@gmail.com

Worship Afternoon

Lake Rotoiti School
St Arnaud
RD2 Nelson
7072
gilesp@lakerotoiti.school.nz
03 5211830



Dear School Parents, Children and Wider School Community,

5th May 2017

By now most of you will have read the Board's announcement of my resignation as Principal of Lake Rotoiti School, which will take effect later this term. It has been a very difficult decision to make and not one that I have taken lightly. The position that I have been offered is Lead Adviser for Communities of Learning, which is the Ministry's initiative for improving all our children's learning opportunities and levels of achievement. The aim is that through the Communities of Learning we will see effective collaboration between schools; taking collective responsibility for children's learning as they journey right through the school system.

I have thoroughly enjoyed my nine years at Lake Rotoiti; it has been a time of significant change for the school as we have introduced the New Zealand Curriculum; worked with the introduction of National Standards and huge changes in the way we approach planning the teaching and learning opportunities for our children and the leadership and management of the school. There are not many families left who will remember the old Community Hall before its conversion to the current Junior Classroom, the lack of a safe carpark for staff and families, or indeed the school before the introduction of the vibrant colour schemes! Whilst I am sorry that I will not be there to see the completion of the swimming pool (which we have been working on as a Board for at least half of my time at Rotoiti!) or the implementation of the plans to renovate the old Junior Classroom to a modern learning environment for the seniors, I feel confident that our Board have the vision and skills to work for the best outcomes for the school community.

Whilst the physical buildings and our approach to teaching and learning may have evolved, I feel that the unique culture of the school and its wonderful children, hard-working and creative staff and supportive parent community have not changed. I will always remember the camaraderie of the Kea Kai tent, the excitement of our School Productions (which have steadily got bigger and more ambitious!) and all the other events which have become markers in our annual school calendar such as Athletics Events, Book Character Day, Matariki Celebrations, and our signature musical and choral performances to name a few.

I know that the Board of Trustees are already working hard on your behalf to appoint my successor and that they will keep you fully advised of timeframes and decisions as they are made. It is an exciting time for the school and I am sure that the new Principal will have new ideas and aspirations which will ensure that it continues to grow its capacity to provide the best experiences for your children.

Yours,

Giles Panting